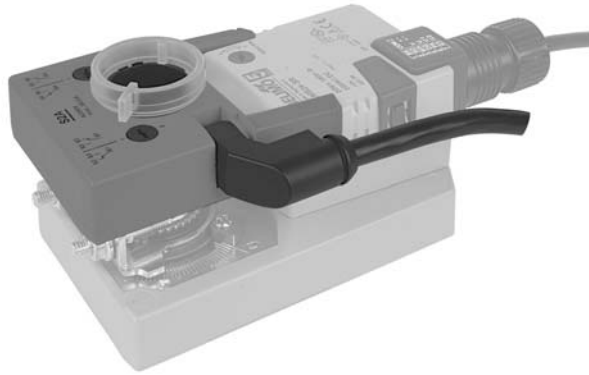


# Feedback Potentiometer P...A GR

For the Non-Spring Return Direct-Coupled Actuators



Types		
P140A GR	Feedback Potentiometer	140 Ω
P200A GR	Feedback Potentiometer	200 Ω
P500A GR	Feedback Potentiometer	500 Ω
P1000A GR	Feedback Potentiometer	1000 Ω
P2800A GR	Feedback Potentiometer	2800 Ω
P5000A GR	Feedback Potentiometer	5000 Ω
P10000A GR	Feedback Potentiometer	10000 Ω

Technical Data	P...A
Resistance values	as above
Output	1 W
Tolerance	± 5%
Linearity	± 2%
Resolution	min. 1%
Residual resistance	max. 5% on both sides
Electrical connection	3 ft, 18 GA appliance cable ½" conduit connector
Humidity	5 to 95% RH non-condensing
Ambient temperature	-22°F to 122°F [-30°C to 50°C]
Storage temperature	-40°F to 176°F [-40°C to 80°C]
Housing	NEMA 2 / IP54
Housing rating	UL94-5VA
Servicing	maintenance free
Agency listings	cULus acc. to UL60730-1 CE according to 73/23/EEC
Quality standard	ISO 9001
Weight	4.6 oz [130 g]

## Application

The P...A GR feedback potentiometers are used with LM, NM, AM, and GM actuators to provide a resistive signal which varies with damper position.

The P...A GR units are applied with commercial proportional temperature controllers to provide feedback of the damper position, or with electric or electronic meters to provide position indication. The signal can also be used as a positioner for parallel operation of multiple actuators.

## Operation

The P...A GR feedback potentiometers are mounted onto the direct coupled actuator. The switches are modular units that mount directly onto LM, NM, AM, and GM type actuators and are locked into place by guiding grooves on the sides of the actuator.

A driver disk is attached to the actuator handle and offers direct transmission of the actuator position to the micro switch cams.

## Mounting Instructions

1. Remove position indicator from actuator.
2. Press down the manual override button and rotate the actuator fully counter clockwise.
3. Place the switch/potentiometer adaptor onto the hex shaft of the handle which is in the center of the valve/actuator coupling.
4. Slide switch onto the actuator using the actuator guiding grooves on the sides of the actuator.
5. Check for correct mating of the adaptor to the switch.
6. Adjust switch dials as necessary.

## Wiring Diagram

